



Planning of offshore wind farms in Lithuania

Miglė Masaitytė

Chief Specialist of EIA division

Ministry of Environment of Lithuania



Legal framework (1)

General issues

- Law on Land of the Republic of Lithuania, 27 January 2004, No. IX-1983
 - Law on Protection of Marine Environment of the Republic of Lithuania, 3 May 2007, No. X-1109
 - Law on Environmental Protection of the Republic of Lithuania, 21 January 1992, No. I-2223
 - Law on Coastal Zone of the Republic of Lithuania, 2 July 2002, No. IX-1016
-

Legal framework (2)



EIA

- Law on the Environmental Impact Assessment of the Proposed Economic Activities of the Republic of Lithuania, 21 June 2005, No. X-258
- ***Recommendations of the Environmental Impact Assessment for Wind Power Plant Installations, approved by the Order of Minister of Environment of the Republic of Lithuania of July 31, 2003, No. 406***
- ***Regulations of Determination of Significance of the Effects of Implementation of Plans, Programs and Proposed Economic Activities on Established or Potential Natura 2000, approved by Order of the Minister of Environment of the Republic of Lithuania of May 22, 2006, No. D1-255***



Legal framework (3)

Territorial planning

- Law on Territorial Planning of the Republic of Lithuania, 15 January 2004, No. X-1962
- ***Regulations of Preparation and Issuance of Conditions for Territorial Planning Documents, approved by the Order of Minister of Environment of the Republic of Lithuania of October 17 2006, No. D1-470***



Legal framework (4)

Design, construction

- Law on Construction of the Republic of Lithuania, 8 November 2001, No. IX-583
- ***Technical Construction Regulations: Construction Works of Exceptional Significance, 16 April 2002, No. 184***
- ***Technical Construction Regulations: Set of Design Conditions for a Construction Work, 30 April 2002, No. 215***

EIA procedure for offshore wind park projects



Screening (determining if EIA is required)

For wind farms screening procedure is required (Annex 2 of Law on EIA)

Possible to start EIA without screening procedure

Scoping phase (preparation, review & approval of EIA program)

Relevant parties of EIA:
Klaipėda county,
Local municipalities,
Klaipėda territorial departments of state institutions for health, fire protection and cultural heritage

Preparation and review of EIA report

Justified decision regarding admissibility of the project

Made by competent authority:
Klaipėda REPD



Territorial planning procedure

Master (general)
plan
of Lithuania



Special territorial
planning document



Detailed plan

Searching and implementation of new energy types and production sources is one of the priorities of Energy infrastructure sector

A territorial planning document for establishes the conditions, rights and obligations in using a land plot and developing an activity in it.

Design and construction procedure



Technical design documentation



Construction permit



Construction works



Acceptance of construction works as fit for use



Integration of wind farms into energy system

Preparation, expertises and approval

Institutions involved: Local municipalities, Klaipėda REPD, owners or users of engineering and utility networks and traffic routes

Current projects for offshore wind farms



Installation of wind farm in the Baltic Sea (Palanga – Šventoji segment)

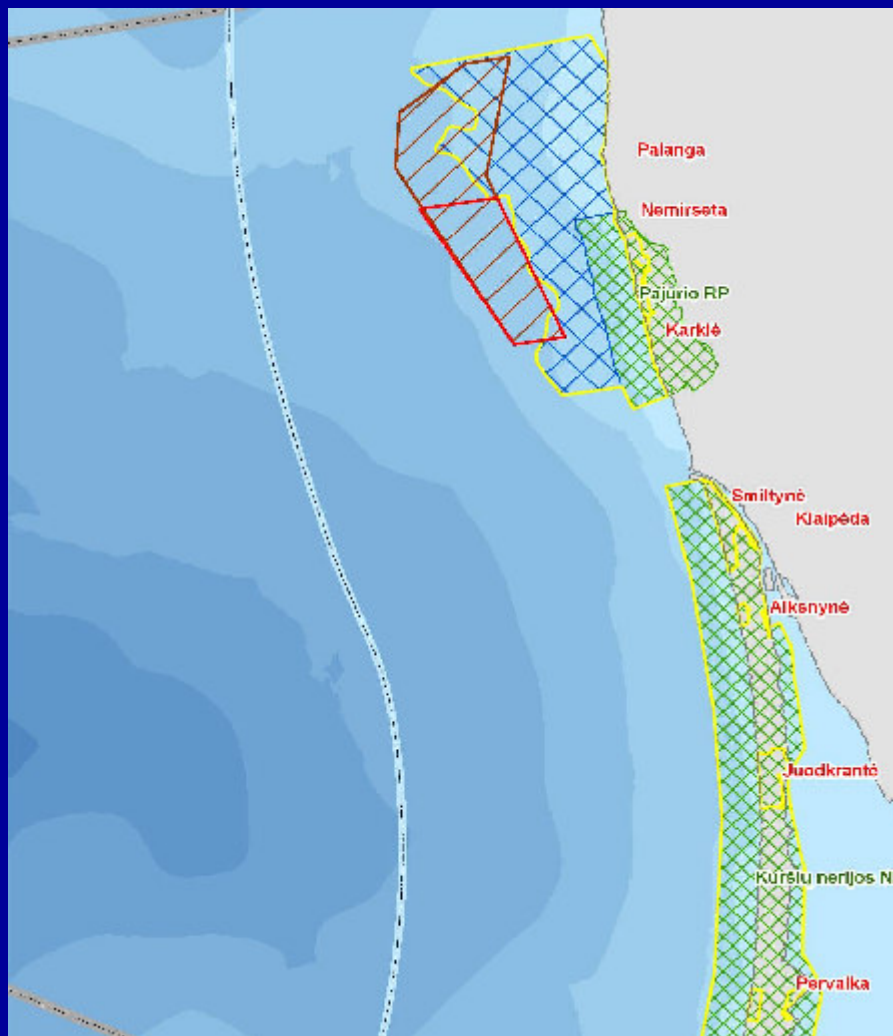
project description: 25 wind power plants, height 80 m,
total power capacity 75 MW

phase: EIA program is approved

problem: objection of local municipalities

main concerns: reduction of recreational potential, visual
impact pollution, impacts on conservative areas

Proposed wind farm location



Wind farm



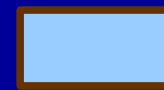
Natura 2000



Thalassic reserve



State parks



Area for wind park
agreed with LMSA

Natura 2000



3 marine Natura 2000 sites in Lithuania:

- “Baltic Sea along the continental coast (17 097 ha);
- “Curonian Spit“ (marine area 12 435 ha);
- “Curonian Lagoon“ (31 641 ha).

Main conflicts

Plans to built wind farm near the border of Natura 2000 area (possible impact on protected values) and lack of scientific information about protected species and habitats outside Natura 2000 areas (willing to expand boundaries of Natura 2000 sites). Legally it is very difficult to forbid to built wind farm in the Sea areas which are not protected.



Next steps

1. To review legislation regulating territorial planning and construction processes
2. To prepare drafts of legal acts regarding territorial planning and construction in the marine zone